

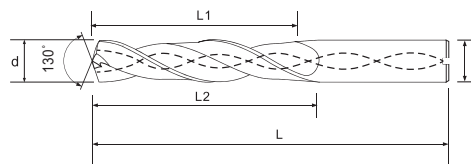
5xD with Coolant Hole for Aluminum Application 5ALC 內冷鋁合金專用



切削條件表 **P178**
Cutting Condition



Max Effective Drill Depth(L1)= Flute Length(L2)-Diameter(d)*1.8
最長有效深度(L1)=溝長(L2)-刃徑(d)*1.8



MODE 型號		Dimension 規格			
Coating 塗層		Diameter	Flute Length	Shank Diameter	Full Length
Uncoated 無塗層	TB	d 刃徑	L2 溝長	D 直徑	L 全長
5ALC0302	5ALC0302 TB	3	26	4	56
5ALC0312	5ALC0312 TB	3.1	26	4	56
5ALC0322	5ALC0322 TB	3.2	26	4	56
5ALC0332	5ALC0332 TB	3.3	26	4	56
5ALC0342	5ALC0342 TB	3.4	26	4	56
5ALC0352	5ALC0352 TB	3.5	26	4	56
5ALC0362	5ALC0362 TB	3.6	30	4	59
5ALC0372	5ALC0372 TB	3.7	30	4	59
5ALC0382	5ALC0382 TB	3.8	30	4	59
5ALC0392	5ALC0392 TB	3.9	30	4	59
5ALC0402	5ALC0402 TB	4	30	4	59
5ALC0412	5ALC0412 TB	4.1	34	5	68
5ALC0422	5ALC0422 TB	4.2	34	5	68
5ALC0432	5ALC0432 TB	4.3	34	5	68
5ALC0442	5ALC0442 TB	4.4	34	5	68
5ALC0452	5ALC0452 TB	4.5	34	5	68
5ALC0462	5ALC0462 TB	4.6	38	5	72
5ALC0472	5ALC0472 TB	4.7	38	5	72
5ALC0482	5ALC0482 TB	4.8	38	5	72
5ALC0492	5ALC0492 TB	4.9	38	5	72
5ALC0502	5ALC0502 TB	5	38	5	72
5ALC0512	5ALC0512 TB	5.1	42	6	80
5ALC0522	5ALC0522 TB	5.2	42	6	80

Application 適用材質：

★ Perfect 最推薦 ◎ Excellent 適合 ○ Good 佳

Carbon steel, Alloy steel 炭素鋼, 合金鋼	Pre-hardened steel 預硬鋼	High-hardened 高硬度鋼				Stainless steel 不銹鋼	Cast iron 鑄鐵	Copper alloy 銅合金, 銅	Aluminum alloy 鋁合金	Titanium alloy 鈦合金	Nickel/Inconel alloy 鎳基合金
	~45HRC	~50HRC	~55HRC	~60HRC	~65HRC						
								◎	◎		

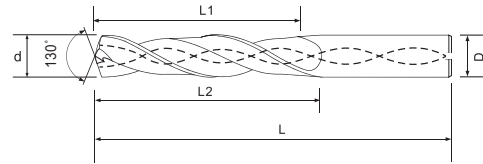
5xD with Coolant Hole for Aluminum Application
5ALC 內冷鋁合金專用



切削條件表 **P178**
Cutting Condition



Max Effective Drill Depth(L1)= Flute Length(L2)-Diameter(d)*1.8
 最長有效深度(L1)=溝長(L2)-刃徑(d)*1.8



MODE 型號		Dimension 規格			
Coating 塗層		Diameter	Flute Length	Shank Diameter	Full Length
Uncoated 無塗層	TB	d 刃徑	L2 溝長	D 直徑	L 全長
5ALC0532	5ALC0532 TB	5.3	42	6	80
5ALC0542	5ALC0542 TB	5.4	42	6	80
5ALC0552	5ALC0552 TB	5.5	42	6	80
5ALC0562	5ALC0562 TB	5.6	46	6	85
5ALC0572	5ALC0572 TB	5.7	46	6	85
5ALC0582	5ALC0582 TB	5.8	46	6	85
5ALC0592	5ALC0592 TB	5.9	46	6	85
5ALC0602	5ALC0602 TB	6	46	6	85
5ALC0612	5ALC0612 TB	6.1	50	7	88
5ALC0622	5ALC0622 TB	6.2	50	7	88
5ALC0632	5ALC0632 TB	6.3	50	7	88
5ALC0642	5ALC0642 TB	6.4	50	7	88
5ALC0652	5ALC0652 TB	6.5	50	7	88
5ALC0662	5ALC0662 TB	6.6	54	7	92
5ALC0672	5ALC0672 TB	6.7	54	7	92
5ALC0682	5ALC0682 TB	6.8	54	7	92
5ALC0692	5ALC0692 TB	6.9	54	7	92
5ALC0702	5ALC0702 TB	7	54	7	92
5ALC0712	5ALC0712 TB	7.1	57	8	95
5ALC0722	5ALC0722 TB	7.2	57	8	95
5ALC0732	5ALC0732 TB	7.3	57	8	95
5ALC0742	5ALC0742 TB	7.4	57	8	95
5ALC0752	5ALC0752 TB	7.5	57	8	95

Application 適用材質：

★ Perfect 最推薦 ◎ Excellent 適合 ○ Good 佳

Carbon steel, Alloy steel 炭素鋼, 合金鋼	Pre-harden steel 預硬鋼	High-hardened 高硬度鋼				Stainless steel 不銹鋼	Cast iron 鑄鐵	Copper alloy 銅合金, 銅	Aluminum alloy 鋁合金	Titanium alloy 鈦合金	Nickel/Inconel alloy 鎳基合金
	~45HRC	~50HRC	~55HRC	~60HRC	~65HRC						
								◎	◎		

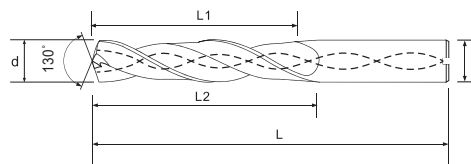
5xD with Coolant Hole for Aluminum Application 5ALC 內冷鋁合金專用



切削條件表 **P178**
Cutting Condition



Max Effective Drill Depth(L1)= Flute Length(L2)-Diameter(d)*1.8
最長有效深度(L1)=溝長(L2)-刃徑(d)*1.8



MODE 型號		Dimension 規格			
Coating 塗層		Diameter	Flute Length	Shank Diameter	Full Length
Uncoated 無塗層	TB	d 刃徑	L2 溝長	D 直徑	L 全長
5ALC0762	5ALC0762 TB	7.6	62	8	100
5ALC0772	5ALC0772 TB	7.7	62	8	100
5ALC0782	5ALC0782 TB	7.8	62	8	100
5ALC0792	5ALC0792 TB	7.9	62	8	100
5ALC0802	5ALC0802 TB	8	62	8	100
5ALC0812	5ALC0812 TB	8.1	65	9	107
5ALC0822	5ALC0822 TB	8.2	65	9	107
5ALC0832	5ALC0832 TB	8.3	65	9	107
5ALC0842	5ALC0842 TB	8.4	65	9	107
5ALC0852	5ALC0852 TB	8.5	65	9	107
5ALC0862	5ALC0862 TB	8.6	68	9	110
5ALC0872	5ALC0872 TB	8.7	68	9	110
5ALC0882	5ALC0882 TB	8.8	68	9	110
5ALC0892	5ALC0892 TB	8.9	68	9	110
5ALC0902	5ALC0902 TB	9	68	9	110
5ALC0912	5ALC0912 TB	9.1	72	10	115
5ALC0922	5ALC0922 TB	9.2	72	10	115
5ALC0932	5ALC0932 TB	9.3	72	10	115
5ALC0942	5ALC0942 TB	9.4	72	10	115
5ALC0952	5ALC0952 TB	9.5	72	10	115
5ALC0962	5ALC0962 TB	9.6	77	10	120
5ALC0972	5ALC0972 TB	9.7	77	10	120
5ALC0982	5ALC0982 TB	9.8	77	10	120

Application 適用材質：

★ Perfect 最推薦 ◎ Excellent 適合 ○ Good 佳

Carbon steel, Alloy steel 炭素鋼, 合金鋼	Pre-hardened steel 預硬鋼	High-hardened 高硬度鋼				Stainless steel 不銹鋼	Cast iron 鑄鐵	Copper alloy 銅合金, 銅	Aluminum alloy 鋁合金	Titanium alloy 鈦合金	Nickel/Inconel alloy 鎳基合金
	~45HRC	~50HRC	~55HRC	~60HRC	~65HRC						
								◎	◎		

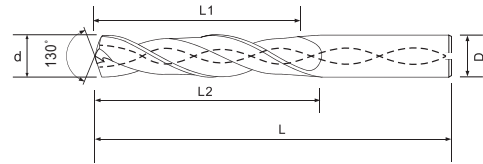
5xD with Coolant Hole for Aluminum Application
5ALC 內冷鋁合金專用



切削條件表 **P178**
Cutting Condition



Max Effective Drill Depth(L1)= Flute Length(L2)-Diameter(d)*1.8
 最長有效深度(L1)=溝長(L2)-刃徑(d)*1.8



MODE 型號		Dimension 規格			
Coating 塗層		Diameter	Flute Length	Shank Diameter	Full Length
Uncoated 無塗層	TB	d 刃徑	L2 溝長	D 直徑	L 全長
5ALC0992	5ALC0992 TB	9.9	77	10	120
5ALC1002	5ALC1002 TB	10	77	10	120
5ALC1012	5ALC1012 TB	10.1	80	11	123
5ALC1022	5ALC1022 TB	10.2	80	11	123
5ALC1032	5ALC1032 TB	10.3	80	11	123
5ALC1042	5ALC1042 TB	10.4	80	11	123
5ALC1052	5ALC1052 TB	10.5	80	11	123
5ALC1062	5ALC1062 TB	10.6	84	11	127
5ALC1072	5ALC1072 TB	10.7	84	11	127
5ALC1082	5ALC1082 TB	10.8	84	11	127
5ALC1092	5ALC1092 TB	10.9	84	11	127
5ALC1102	5ALC1102 TB	11	84	11	127
5ALC1112	5ALC1112 TB	11.1	88	12	135
5ALC1122	5ALC1122 TB	11.2	88	12	135
5ALC1132	5ALC1132 TB	11.3	88	12	135
5ALC1142	5ALC1142 TB	11.4	88	12	135
5ALC1152	5ALC1152 TB	11.5	88	12	135
5ALC1162	5ALC1162 TB	11.6	93	12	140
5ALC1172	5ALC1172 TB	11.7	93	12	140
5ALC1182	5ALC1182 TB	11.8	93	12	140
5ALC1192	5ALC1192 TB	11.9	93	12	140
5ALC1202	5ALC1202 TB	12	93	12	140

Application 適用材質：

★ Perfect 最推薦 ◎ Excellent 適合 ○ Good 佳

Carbon steel, Alloy steel 炭素鋼, 合金鋼	Pre-harden steel 預硬鋼	High-hardened 高硬度鋼				Stainless steel 不鏽鋼	Cast iron 鑄鐵	Copper alloy 銅合金, 銅	Aluminum alloy 鋁合金	Titanium alloy 鈦合金	Nickel/Inconel alloy 鎳基合金
	~45HRC	~50HRC	~55HRC	~60HRC	~65HRC						
								◎	◎		