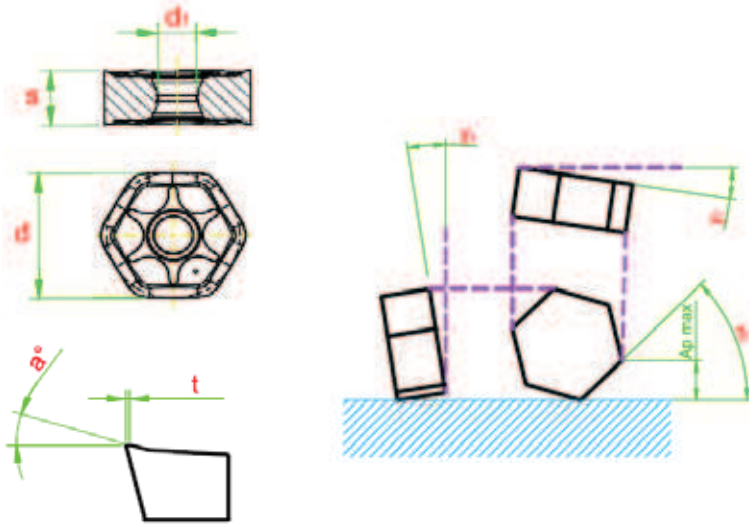




切 削
條件表 **P238**
Cutting Condition

HN Indexable Insert

HN 雙面六角銑刀

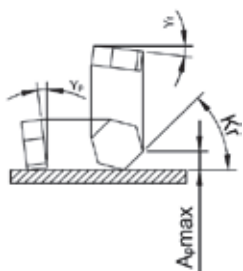


Shape 外觀	Item Code 規格碼	Dimensions (mm) 規格					Coating 塗層		Milling 銑削	P	M	K
		d	d1	s	a	t	nACro	SH				
	HNGX0604-R-3225	10.5	3.64	5.26	15	0.08		✓	Roughing 粗銑	●	▲	●
									Medium 中	●	▲	●
									Finishing 精銑	●	▲	●
	HNGX0604-R-4225	10.5	3.64	5.26	15	0.08	✓		Roughing 粗銑	●	●	▲
									Medium 中	●	●	▲
									Finishing 精銑	●	●	▲
	HNGX0906-R-3225	16.5	4.74	6.4	15	0.08		✓	Roughing 粗銑	●	▲	●
									Medium 中	●	▲	●
									Finishing 精銑	●	▲	●
	HNGX0906-R-4225	16.5	4.74	6.4	15	0.08	✓		Roughing 粗銑	●	●	▲
									Medium 中	●	●	▲
									Finishing 精銑	●	●	▲

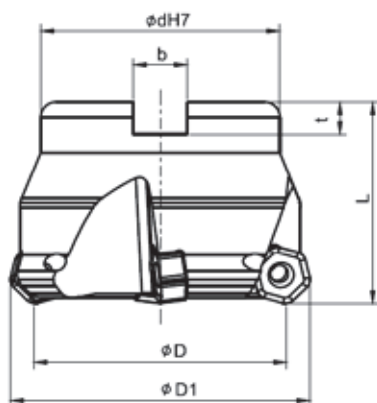
●: Main Application 主要應用 ▲: Secondary Application 次要應用

■ HN06 Holder

● HN06 捨棄式整體刀柄

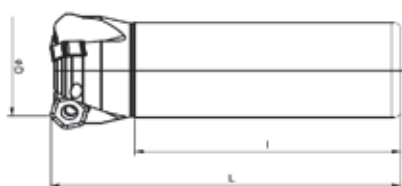
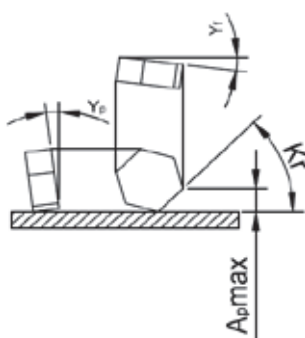


Apmax	3mm
yp	7°
yf	7°
Kr	45°



Shell Type Milling Cutter 殼型面銑刀

Item Code 規格碼	Dimensions (mm) 規格							Available Tools 適用工具		
	D	dh7	L	D1	b	t	齒數T*	Insert 刀片	Screw 星形螺絲	Screwdriver 旗形板手
PHN06-4005-C16	40	16	40	47.3	8.4	5.6	5	HNGX0604-R	M3x9.0x5.0xT15 (D07160100114)	T15
PHN06-5004-C22	50	22	40	57.3	10.4	6.3	4			
PHN06-5006-C22	50	22	40	57.3	10.4	6.3	6			
PHN06-6306-C22	63	22	40	70.3	10.4	6.3	6			
PHN06-6308-C22	63	22	40	70.3	10.4	6.3	8			
PHN06-8007-C27	80	27	50	86.8	12.4	7.0	7			
PHN06-8010-C27	80	27	50	86.8	12.4	7.0	10			



Apmax	3mm
yp	7°
yf	7°
Kr	45°

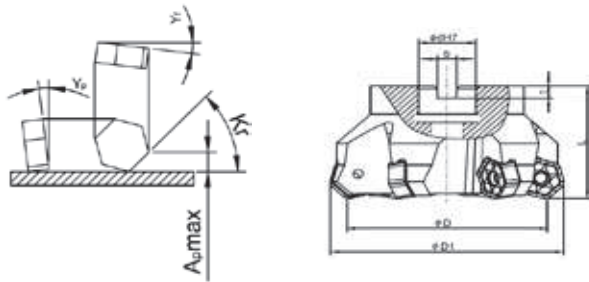


Holder 刀桿式六角銑刀

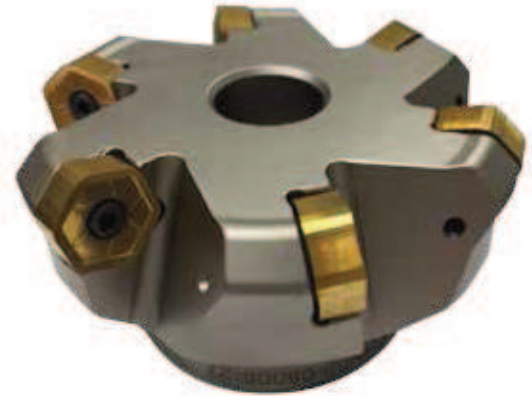
Item Code 規格碼	Dimensions (mm) 規格				Available Tools 適用工具		
	D	L	I	齒數T*	Insert 刀片	Screw 星形螺絲	Screwdriver 旗形板手
HHN06-2502-S25-150	25	150	100	2	HNGX0604-R	M3x9.0x5.0xT15 (D07160100114)	T15
HHN06-2503-S25-150	25	150	100	3			
HHN06-3203-S32-150	32	150	100	3			
HHN06-3204-S32-150	32	150	100	4			

■ HN09 Holder

● HN09 捨棄式整體刀柄



Apmax	5mm
γ_p	7°
γ_f	7°
Kr	45°



Shell Type Milling Cutter 殼型面銑刀

Item Code 規格碼	Dimensions (mm) 規格						Available Tools 適用工具		
	dh7	D	L	b	t	齒數T*	Insert 刀片	Screw 星形螺絲	Screwdriver 旗形板手
PHN09-5004-C22	22	50.0	40	10.4	6.3	4	HNGX 0906-R	M4.3x12.2x6xT20 (D07160100118)	T20
PHN09-6306-C22	22	63.0	40	10.4	6.3	6			
PHN09-8006-C27	27	80.0	50	12.4	7.0	6			
PHN09-8008-C27	27	80.0	50	12.4	7.0	8			
PHN09-10008-C32	32	100.0	50	14.4	8.0	8			
PHN09-10010-C32	32	100.0	50	14.4	8.0	10			