

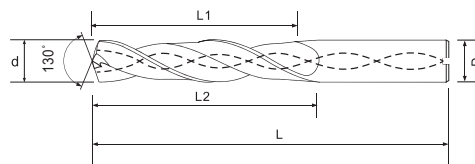
## 8xD with Coolant Hole for Aluminum Application 8ALC 內冷鋁合金專用



切削條件表 **P178**  
Cutting Condition



Max Effective Drill Depth(L1)= Flute Length(L2)-Diameter(d)\*1.8  
最長有效深度(L1)=溝長(L2)-刃徑(d)\*1.8



MODE 型號		Dimension 規格			
Coating 塗層		Diameter	Flute Length	Shank Diameter	Full Length
Uncoated 無塗層	TB	d 刃徑	L2 溝長	D 直徑	L 全長
8ALC0302	8ALC0302 TB	3	36	4	66
8ALC0312	8ALC0312 TB	3.1	36	4	66
8ALC0322	8ALC0322 TB	3.2	36	4	66
8ALC0332	8ALC0332 TB	3.3	36	4	66
8ALC0342	8ALC0342 TB	3.4	36	4	66
8ALC0352	8ALC0352 TB	3.5	36	4	66
8ALC0362	8ALC0362 TB	3.6	41	4	70
8ALC0372	8ALC0372 TB	3.7	41	4	70
8ALC0382	8ALC0382 TB	3.8	41	4	70
8ALC0392	8ALC0392 TB	3.9	41	4	70
8ALC0402	8ALC0402 TB	4	41	4	70
8ALC0412	8ALC0412 TB	4.1	46	5	80
8ALC0422	8ALC0422 TB	4.2	46	5	80
8ALC0432	8ALC0432 TB	4.3	46	5	80
8ALC0442	8ALC0442 TB	4.4	46	5	80
8ALC0452	8ALC0452 TB	4.5	46	5	80
8ALC0462	8ALC0462 TB	4.6	53	5	87
8ALC0472	8ALC0472 TB	4.7	53	5	87
8ALC0482	8ALC0482 TB	4.8	53	5	87
8ALC0492	8ALC0492 TB	4.9	53	5	87
8ALC0502	8ALC0502 TB	5	53	5	87
8ALC0512	8ALC0512 TB	5.1	58	6	96
8ALC0522	8ALC0522 TB	5.2	58	6	96
8ALC0532	8ALC0532 TB	5.3	58	6	96
8ALC0542	8ALC0542 TB	5.4	58	6	96
8ALC0552	8ALC0552 TB	5.5	58	6	96
8ALC0562	8ALC0562 TB	5.6	63	6	101
8ALC0572	8ALC0572 TB	5.7	63	6	101
8ALC0582	8ALC0582 TB	5.8	63	6	101
8ALC0592	8ALC0592 TB	5.9	63	6	101
8ALC0602	8ALC0602 TB	6	63	6	101

Application 適用材質：

★ Perfect 最推薦    ◎ Excellent 適合    ○ Good 佳

Carbon steel, Alloy steel 炭素鋼, 合金鋼	Pre-harden steel 預硬鋼	High-hardened 高硬度鋼				Stainless steel 不銹鋼	Cast iron 鑄鐵	Copper alloy 銅合金, 銅	Aluminum alloy 鋁合金	Titanium alloy 鈦合金	Nickel/Inconel alloy 鎳基合金
	~45HRC	~50HRC	~55HRC	~60HRC	~65HRC						
								◎	◎		

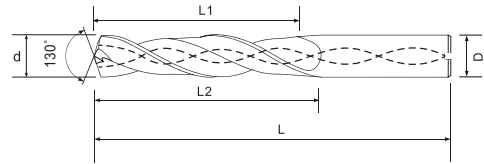
**8xD with Coolant Hole for Aluminum Application**  
**8ALC 內冷鋁合金專用**



切削條件表 **P178**  
Cutting Condition



Max Effective Drill Depth(L1)= Flute Length(L2)-Diameter(d)\*1.8  
 最長有效深度(L1)=溝長(L2)-刃徑(d)\*1.8



MODE 型號		Dimension 規格			
Coating 塗層		Diameter	Flute Length	Shank Diameter	Full Length
Uncoated 無塗層	TB	d 刃徑	L2 溝長	D 直徑	L 全長
8ALC0612	8ALC0612 TB	6.1	68	7	106
8ALC0622	8ALC0622 TB	6.2	68	7	106
8ALC0632	8ALC0632 TB	6.3	68	7	106
8ALC0642	8ALC0642 TB	6.4	68	7	106
8ALC0652	8ALC0652 TB	6.5	68	7	106
8ALC0662	8ALC0662 TB	6.6	73	7	111
8ALC0672	8ALC0672 TB	6.7	73	7	111
8ALC0682	8ALC0682 TB	6.8	73	7	111
8ALC0692	8ALC0692 TB	6.9	73	7	111
8ALC0702	8ALC0702 TB	7	73	7	111
8ALC0712	8ALC0712 TB	7.1	78	8	116
8ALC0722	8ALC0722 TB	7.2	78	8	116
8ALC0732	8ALC0732 TB	7.3	78	8	116
8ALC0742	8ALC0742 TB	7.4	78	8	116
8ALC0752	8ALC0752 TB	7.5	78	8	116
8ALC0762	8ALC0762 TB	7.6	84	8	122
8ALC0772	8ALC0772 TB	7.7	84	8	122
8ALC0782	8ALC0782 TB	7.8	84	8	122
8ALC0792	8ALC0792 TB	7.9	84	8	122
8ALC0802	8ALC0802 TB	8	84	8	122
8ALC0812	8ALC0812 TB	8.1	89	9	131
8ALC0822	8ALC0822 TB	8.2	89	9	131
8ALC0832	8ALC0832 TB	8.3	89	9	131
8ALC0842	8ALC0842 TB	8.4	89	9	131
8ALC0852	8ALC0852 TB	8.5	89	9	131
8ALC0862	8ALC0862 TB	8.6	94	9	136
8ALC0872	8ALC0872 TB	8.7	94	9	136
8ALC0882	8ALC0882 TB	8.8	94	9	136
8ALC0892	8ALC0892 TB	8.9	94	9	136
8ALC0902	8ALC0902 TB	9	94	9	136
8ALC0912	8ALC0912 TB	9.1	99	10	142

Application 適用材質：

★ Perfect 最推薦    ◎ Excellent 適合    ○ Good 佳

Carbon steel, Alloy steel 炭素鋼, 合金鋼	Pre-harden steel 預硬鋼	High-hardened 高硬度鋼				Stainless steel 不鏽鋼	Cast iron 鑄鐵	Copper alloy 銅合金, 銅	Aluminum alloy 鋁合金	Titanium alloy 鈦合金	Nickel/Inconel alloy 鎳基合金
	~45HRC	~50HRC	~55HRC	~60HRC	~65HRC						
								◎	◎		

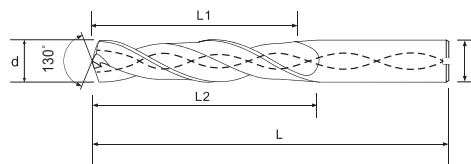
## 8xD with Coolant Hole for Aluminum Application 8ALC 內冷鋁合金專用



切削條件表 **P178**  
Cutting Condition



Max Effective Drill Depth(L1)= Flute Length(L2)-Diameter(d)\*1.8  
最長有效深度(L1)=溝長(L2)-刃徑(d)\*1.8



MODE 型號		Dimension 規格			
Coating 塗層		Diameter	Flute Length	Shank Diameter	Full Length
Uncoated 無塗層	TB	d 刃徑	L2 溝長	D 直徑	L 全長
8ALC0922	8ALC0922 TB	9.2	99	10	142
8ALC0932	8ALC0932 TB	9.3	99	10	142
8ALC0942	8ALC0942 TB	9.4	99	10	142
8ALC0952	8ALC0952 TB	9.5	99	10	142
8ALC0962	8ALC0962 TB	9.6	105	10	148
8ALC0972	8ALC0972 TB	9.7	105	10	148
8ALC0982	8ALC0982 TB	9.8	105	10	148
8ALC0992	8ALC0992 TB	9.9	105	10	148
8ALC1002	8ALC1002 TB	10	105	10	148
8ALC1012	8ALC1012 TB	10.1	110	11	153
8ALC1022	8ALC1022 TB	10.2	110	11	153
8ALC1032	8ALC1032 TB	10.3	110	11	153
8ALC1042	8ALC1042 TB	10.4	110	11	153
8ALC1052	8ALC1052 TB	10.5	110	11	153
8ALC1062	8ALC1062 TB	10.6	115	11	158
8ALC1072	8ALC1072 TB	10.7	115	11	158
8ALC1082	8ALC1082 TB	10.8	115	11	158
8ALC1092	8ALC1092 TB	10.9	115	11	158
8ALC1102	8ALC1102 TB	11	115	11	158
8ALC1112	8ALC1112 TB	11.1	120	12	168
8ALC1122	8ALC1122 TB	11.2	120	12	168
8ALC1132	8ALC1132 TB	11.3	120	12	168
8ALC1142	8ALC1142 TB	11.4	120	12	168
8ALC1152	8ALC1152 TB	11.5	120	12	168
8ALC1162	8ALC1162 TB	11.6	126	12	174
8ALC1172	8ALC1172 TB	11.7	126	12	174
8ALC1182	8ALC1182 TB	11.8	126	12	174
8ALC1192	8ALC1192 TB	11.9	126	12	174
8ALC1202	8ALC1202 TB	12	126	12	174

Application 適用材質：

★ Perfect 最推薦    ◎ Excellent 適合    ○ Good 佳

Carbon steel, Alloy steel 炭素鋼, 合金鋼	Pre-harden steel 預硬鋼	High-hardened 高硬度鋼				Stainless steel 不鏽鋼	Cast iron 鑄鐵	Copper alloy 銅合金, 銅	Aluminum alloy 鋁合金	Titanium alloy 鈦合金	Nickel/Inconel alloy 鎳基合金
	~45HRC	~50HRC	~55HRC	~60HRC	~65HRC						
								◎	◎		