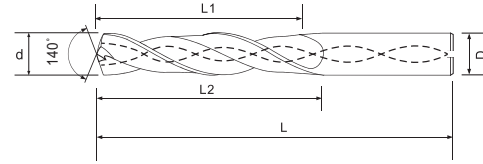


8xD High Performance with Coolant Hole 8PKC 高效泛用內冷鎢鋼鑽頭



Max Effective Drill Depth(L1)= Flute Length(L2)-Diameter(d)*1.5
最長有效深度(L1)=溝長(L2)-刃徑(d)*1.5



MODE	Fraction (letter)	Diameter	Flute Length	Shank Diameter	Full Length
型號	英寸(代號)	d 刃徑	L2 溝長	D 直徑	L 全長
8PKC0302		3	35	6	80
8PKC0312		3.1	35	6	80
8PKC03152		3.15	35	6	80
8PKC031752	1/8"	3.175	35	6	80
8PKC0322		3.2	35	6	80
8PKC03252		3.25	35	6	80
8PKC0332		3.3	35	6	80
8PKC03382		3.38	35	6	80
8PKC0342		3.4	35	6	80
8PKC0352		3.5	35	6	80
8PKC035712	9/64" (#28)	3.571	40	6	85
8PKC0362		3.6	40	6	85
8PKC0372		3.7	40	6	85
8PKC0382	(#25)	3.8	40	6	85
8PKC03852		3.85	40	6	85
8PKC0392		3.9	40	6	85
8PKC03972	5/32"	3.97	40	6	85
8PKC0402		4	40	6	85
8PKC040382	(#21)	4.038	45	6	90
8PKC0412		4.1	45	6	90
8PKC0422		4.2	45	6	90
8PKC0432	(#18)	4.3	45	6	90
8PKC04352		4.35	45	6	90
8PKC043662	11/64"	4.366	45	6	90
8PKC0442		4.4	45	6	90
8PKC04452		4.45	45	6	90
8PKC0452		4.5	45	6	90

Application 適用材質：

★ Perfect 最推薦 ◎ Excellent 適合 ○ Good 佳

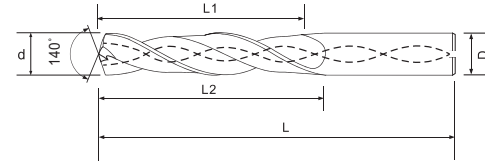
Carbon steel, Alloy steel 炭素鋼, 合金鋼	Pre-harden steel 預硬鋼	High-hardened 高硬度鋼				Stainless steel 不銹鋼	Cast iron 鑄鐵	Copper alloy 銅合金, 銅	Aluminum alloy 鋁合金	Titanium alloy 鈦合金	Nickel/Inconel alloy 鎳基合金
	~45HRC	~50HRC	~55HRC	~60HRC	~65HRC						
◎	◎	○				○	◎			○	○

8xD High Performance with Coolant Hole
8PKC 高效泛用內冷鎢鋼鑽頭



切削條件表 **P174**
Cutting Condition

Max Effective Drill Depth(L1)= Flute Length(L2)-Diameter(d)*1.5
 最長有效深度(L1)=溝長(L2)-刃徑(d)*1.5



MODE	Fraction (letter)	Diameter	Flute Length	Shank Diameter	Full Length
型號	英寸(代號)	d 刃徑	L2 溝長	D 直徑	L 全長
8PKC0462		4.6	50	6	95
8PKC04652		4.65	50	6	95
8PKC0472	(#13)	4.7	50	6	95
8PKC047632	3/16"	4.763	50	6	95
8PKC0482	(#12)	4.8	50	6	95
8PKC0492		4.9	50	6	95
8PKC0502		5	50	6	95
8PKC0512		5.1	55	6	100
8PKC051062	(#7)	5.106	55	6	100
8PKC051592	13/64"	5.159	55	6	100
8PKC0522		5.2	55	6	100
8PKC0532		5.3	55	6	100
8PKC0542		5.4	55	6	100
8PKC05412	(#3)	5.41	55	6	100
8PKC0552		5.5	55	6	100
8PKC055562	7/32"	5.556	60	6	105
8PKC0562		5.6	60	6	105
8PKC0572		5.7	60	6	105
8PKC05752		5.75	60	6	105
8PKC0582		5.8	60	6	105
8PKC0592		5.9	60	6	105
8PKC059542	15/64"	5.954	60	6	105
8PKC0602		6	60	6	105
8PKC0612		6.1	65	8	110
8PKC0622		6.2	65	8	110
8PKC0632		6.3	65	8	110
8PKC06352	1/4" (E)	6.35	65	8	110

Application 適用材質：

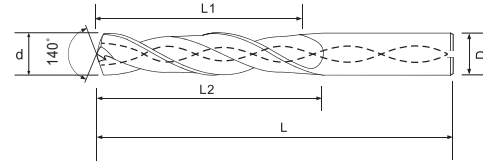
★ Perfect 最推薦 ◎ Excellent 適合 ○ Good 佳

Carbon steel, Alloy steel 炭素鋼, 合金鋼	Pre-harden steel 預硬鋼	High-hardened 高硬度鋼				Stainless steel 不鏽鋼	Cast iron 鑄鐵	Copper alloy 銅合金, 銅	Aluminum alloy 鋁合金	Titanium alloy 鈦合金	Nickel/Inconel alloy 鎳基合金
	~45HRC	~50HRC	~55HRC	~60HRC	~65HRC						
◎	◎	○				○	◎			○	○

8xD High Performance with Coolant Hole 8PKC 高效泛用內冷鎢鋼鑽頭



Max Effective Drill Depth(L1)= Flute Length(L2)-Diameter(d)*1.5
最長有效深度(L1)=溝長(L2)-刃徑(d)*1.5



MODE	Fraction (letter)	Diameter	Flute Length	Shank Diameter	Full Length
型號	英吋(代號)	d 刃徑	L2 溝長	D 直徑	L 全長
8PKC0642		6.4	65	8	110
8PKC0652		6.5	65	8	110
8PKC065282	(F)	6.528	70	8	115
8PKC0662		6.6	70	8	115
8PKC0672		6.7	70	8	115
8PKC067462	17/64"	6.746	70	8	115
8PKC0682		6.8	70	8	115
8PKC0692		6.9	70	8	115
8PKC0702		7	70	8	115
8PKC0712		7.1	75	8	120
8PKC071452	9/32" (K)	7.145	75	8	120
8PKC0722		7.2	75	8	120
8PKC07252		7.25	75	8	120
8PKC0732		7.3	75	8	120
8PKC0742		7.4	75	8	120
8PKC07452		7.45	75	8	120
8PKC0752		7.5	75	8	120
8PKC075412		7.541	80	8	125
8PKC0762		7.6	80	8	125
8PKC0772		7.7	80	8	125
8PKC0782		7.8	80	8	125
8PKC0792		7.9	80	8	125
8PKC079382	5/16"	7.938	80	8	125
8PKC0802		8	80	8	125
8PKC0812		8.1	85	10	135
8PKC0822		8.2	85	10	135
8PKC0832		8.3	85	10	135

Application 適用材質：

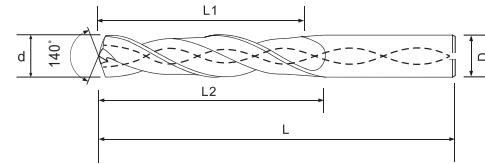
★ Perfect 最推薦 ◎ Excellent 適合 ○ Good 佳

Carbon steel, Alloy steel 炭素鋼, 合金鋼	Pre-harden steel 預硬鋼	High-hardened 高硬度鋼				Stainless steel 不鏽鋼	Cast iron 鑄鐵	Copper alloy 銅合金, 銅	Aluminum alloy 鋁合金	Titanium alloy 鈦合金	Nickel/Inconel alloy 鎳基合金
	~45HRC	~50HRC	~55HRC	~60HRC	~65HRC						
◎	◎	○				○	◎			○	○

8xD High Performance with Coolant Hole
8PKC 高效泛用內冷鎢鋼鑽頭



Max Effective Drill Depth(L1)= Flute Length(L2)-Diameter(d)*1.5
 最長有效深度(L1)=溝長(L2)-刃徑(d)*1.5



MODE	Fraction (letter)	Diameter	Flute Length	Shank Diameter	Full Length
型號	英寸(代號)	d 刃徑	L2 溝長	D 直徑	L 全長
8PKC083342	21/64"	8.334	85	10	135
8PKC0842		8.4	85	10	135
8PKC0852		8.5	85	10	135
8PKC0862		8.6	90	10	140
8PKC0872		8.7	90	10	140
8PKC087332	11/32"	8.733	90	10	140
8PKC0882		8.8	90	10	140
8PKC0892		8.9	90	10	140
8PKC0902		9	90	10	140
8PKC09052		9.05	95	10	145
8PKC0912		9.1	95	10	145
8PKC091292	23/64"	9.129	95	10	145
8PKC0922		9.2	95	10	145
8PKC09252		9.25	95	10	145
8PKC0932		9.3	95	10	145
8PKC09352		9.35	95	10	145
8PKC0942		9.4	95	10	145
8PKC0952		9.5	95	10	145
8PKC095252	3/8"	9.525	100	10	150
8PKC0962		9.6	100	10	150
8PKC0972		9.7	100	10	150
8PKC0982		9.8	100	10	150
8PKC0992		9.9	100	10	150
8PKC099212	25/64"	9.921	100	10	150
8PKC1002		10	100	10	150
8PKC1012		10.1	105	12	160
8PKC1022		10.2	105	12	160

Application 適用材質：

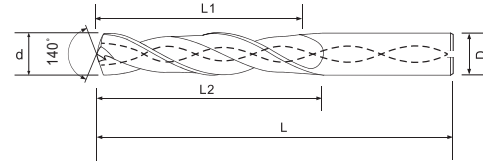
★ Perfect 最推薦 ◎ Excellent 適合 ○ Good 佳

Carbon steel, Alloy steel 炭素鋼, 合金鋼	Pre-harden steel 預硬鋼	High-hardened 高硬度鋼				Stainless steel 不銹鋼	Cast iron 鑄鐵	Copper alloy 銅合金, 銅	Aluminum alloy 鋁合金	Titanium alloy 鈦合金	Nickel/Inconel alloy 鎳基合金
	~45HRC	~50HRC	~55HRC	~60HRC	~65HRC						
◎	◎	○				○	◎			○	○

8xD High Performance with Coolant Hole 8PKC 高效泛用內冷鎢鋼鑽頭



Max Effective Drill Depth(L1)= Flute Length(L2)-Diameter(d)*1.5
最長有效深度(L1)=溝長(L2)-刃徑(d)*1.5



MODE	Fraction (letter)	Diameter	Flute Length	Shank Diameter	Full Length
型號	英寸(代號)	d 刃徑	L2 溝長	D 直徑	L 全長
8PKC10252		10.25	105	12	160
8PKC1032		10.3	105	12	160
8PKC10322	13/32"	10.32	105	12	160
8PKC1042		10.4	105	12	160
8PKC1052		10.5	105	12	160
8PKC10552		10.55	110	12	165
8PKC1062		10.6	110	12	165
8PKC1072		10.7	110	12	165
8PKC107162	27/64"	10.716	110	12	165
8PKC1082		10.8	110	12	165
8PKC1092		10.9	110	12	165
8PKC1102		11	110	12	165
8PKC1112		11.1	115	12	170
8PKC111132	7/16"	11.113	115	12	170
8PKC1122		11.2	115	12	170
8PKC11252		11.25	115	12	170
8PKC1132		11.3	115	12	170
8PKC11352		11.35	115	12	170
8PKC1142		11.4	115	12	170
8PKC11452		11.45	115	12	170
8PKC1152		11.5	115	12	170
8PKC115092	29/64"	11.509	120	12	175
8PKC1162		11.6	120	12	175
8PKC1172		11.7	120	12	175
8PKC1182		11.8	120	12	175
8PKC1192		11.9	120	12	175
8PKC119082	15/32"	11.908	120	12	175
8PKC1202		12	120	12	175

Application 適用材質：

★ Perfect 最推薦 ◎ Excellent 適合 ○ Good 佳

Carbon steel, Alloy steel 炭素鋼, 合金鋼	Pre-harden steel 預硬鋼	High-hardened 高硬度鋼				Stainless steel 不銹鋼	Cast iron 鑄鐵	Copper alloy 銅合金, 銅	Aluminum alloy 鋁合金	Titanium alloy 鈦合金	Nickel/Inconel alloy 鎳基合金
	~45HRC	~50HRC	~55HRC	~60HRC	~65HRC						
◎	◎	○				○	◎			○	○