

# POWER TIPS

## ■ 220° Ball Nose Cutter



### ● 220° 球刀

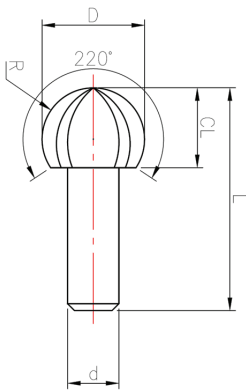
40



MODE	Corner Radius	Diameter	Cutting Length	Effective Rake Angle	Shank Diameter	Full Length	Flutes
型號	R 值	D 刀徑	CL 刃長	有效切削角	d 柄徑	L 全長	Z 刃數
TRSS12006T	6	12	9.3	220°	6	26	6
TRSS16006T	8	16	13.3		6	32	6
TRSS20006T	10	20	16		10	35	6
TRSS25006T	12.5	25	20		12	40	6

特殊規格可依需求接單生產

Make to order for special requests is available.



Application 適用材質：

◎ Recommend 最適合

○ Suitable 適合X

○ Not Recommend 不建議

carbon steel, Alloy steel 炭素鋼, 合金鋼	Pre-harden steel 預硬鋼	High-hardened 高硬度鋼				Stainless steel 不銹鋼	Copper alloy 銅合金, 銅	Aluminum alloy 鋁合金
	~45HRC	~50HRC	~55HRC	~60HRC	~65HRC			
◎	◎	○	X	X	X	○	○	○